

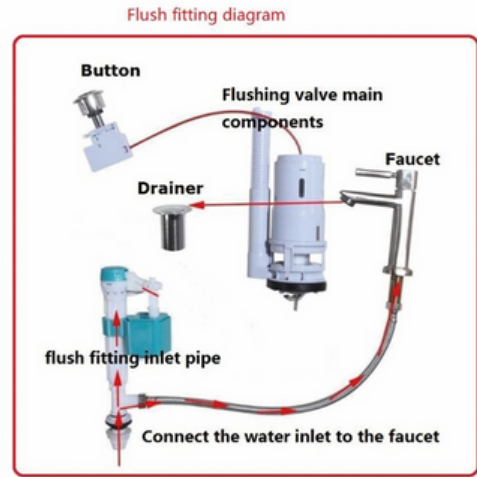
# Close Coupled Toilet and Cistern With Sink - Aachen 179WB Installation Guide



1. The tap was mounted on the washbasin, then connect the inlet pipe



2. Press the button



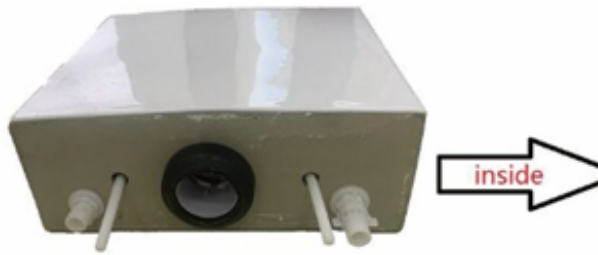
The flush unit will come in as whole

It needs to be disassembled in to 3 parts

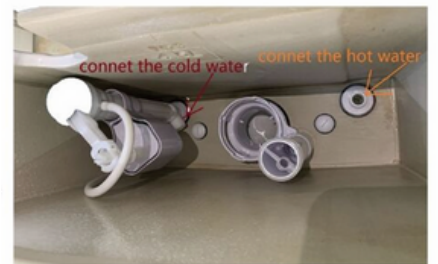
then reassemble them with the lavatory panel.



4. Install drain valve



5. Install the intake pipe and lock screw



6. Water pipe connection fittings



7. Put it on the toilet bowl and lock the screw



8. Install the seat cover