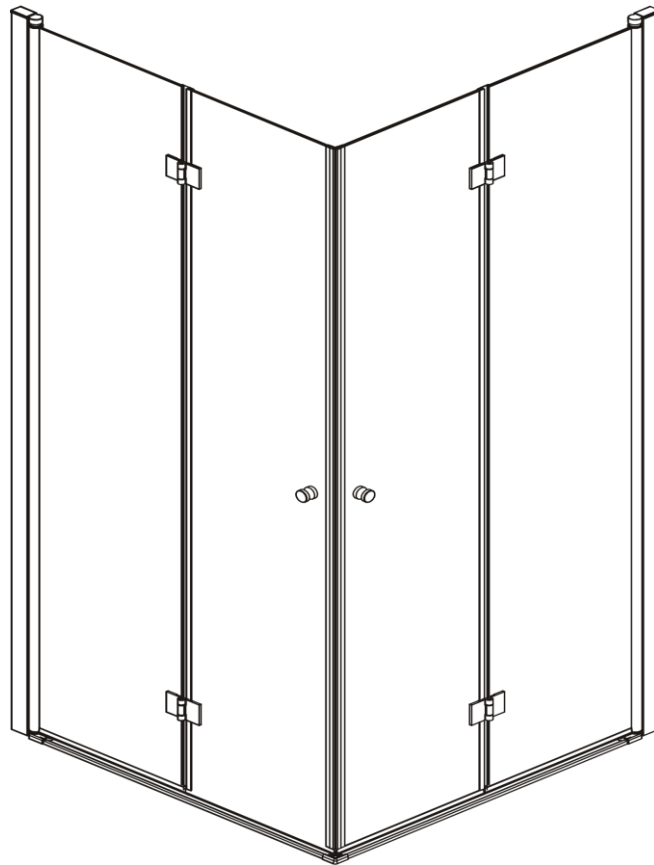


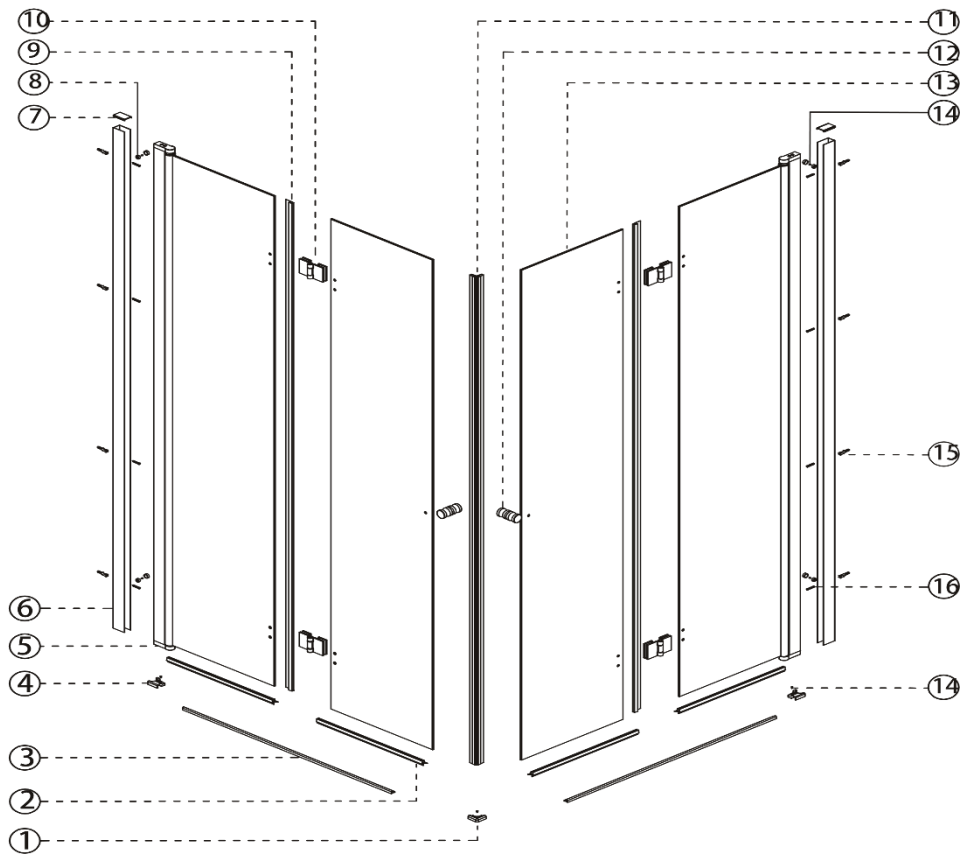





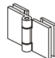








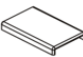



DUROVIN
BATHROOMS



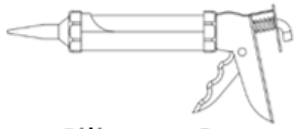
Ravenna 26 Double Door

Included Parts

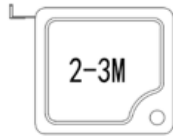


Ref	Description	Illustrations	Qty	Ref	Description	Illustration	Qty
①	Fixing Piece		1	⑨	Seals		2
②	Seals		4	⑩	Hinges		4
③	Weather Bar		2	⑪	Seals		2
④	Fixing Pieces		R/L *1	⑫	Handles		2
⑤	Glass Side Panels		2	⑬	Glass Doors		2
⑥	Aluminium Profiles		2	⑭	ST4*16		7
⑦	Caps		2	⑮	Wall Plugs		11
⑧	Caps		4	⑯	ST4*30		8

Tools Required



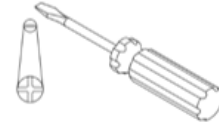
Silicone Gun



Tape Measure



Scissors



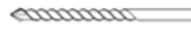
Philips Screwdriver



Hammer



Allen Keys



Drill Bit



Pencil



Power Drill



Level

Two people required. We recommend that a technically competent installer should undertake this installation.

Be sure you have all included parts and tools required before beginning installation and that you have plenty of space for assembly.

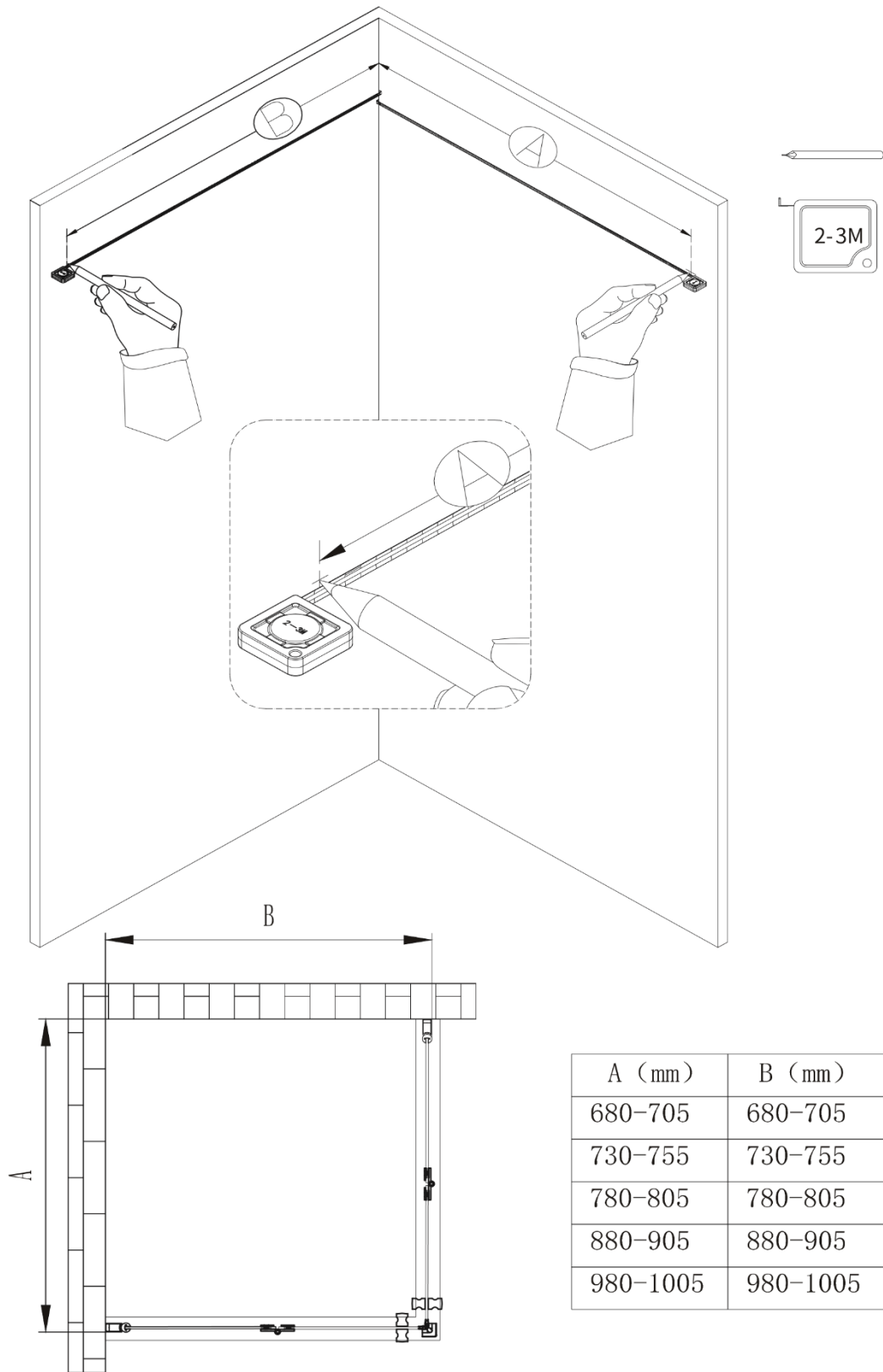
If you have ordered this shower enclosure with one of our shower trays, **please note** that tiling should be done before the shower tray is installed. This is so that the shower tray can be pushed up against the tiles and sealed with silicone.

PRE-INSTALLATION AND TECHNICAL REQUIREMENTS

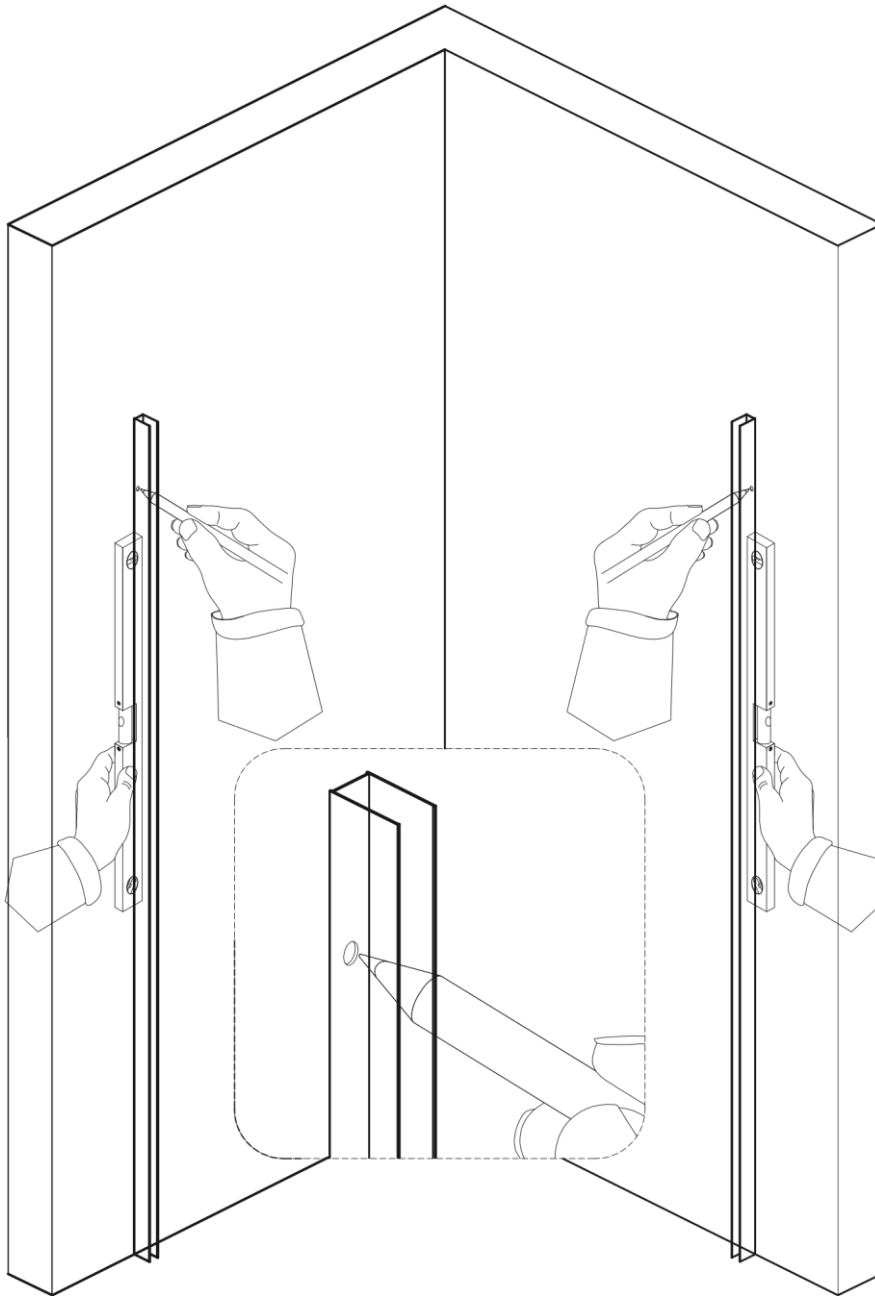
- All dimensions are shown in millimetres, except where otherwise indicated.
- Ensure that the enclosure set is fitted to a level floor and vertical wall surface.
- This instruction manual is applicable for both pre-tiled wall and plain walls.
- The wall fixings included with this product are suitable for solid walls only. Plasterboard or stud walls may require specialist fixings (not supplied).
- Due to the possibility of residual spray, the area around the outside of the shower tray should be tiled, or made otherwise water resistant.

IMPORTANT SAFETY NOTES

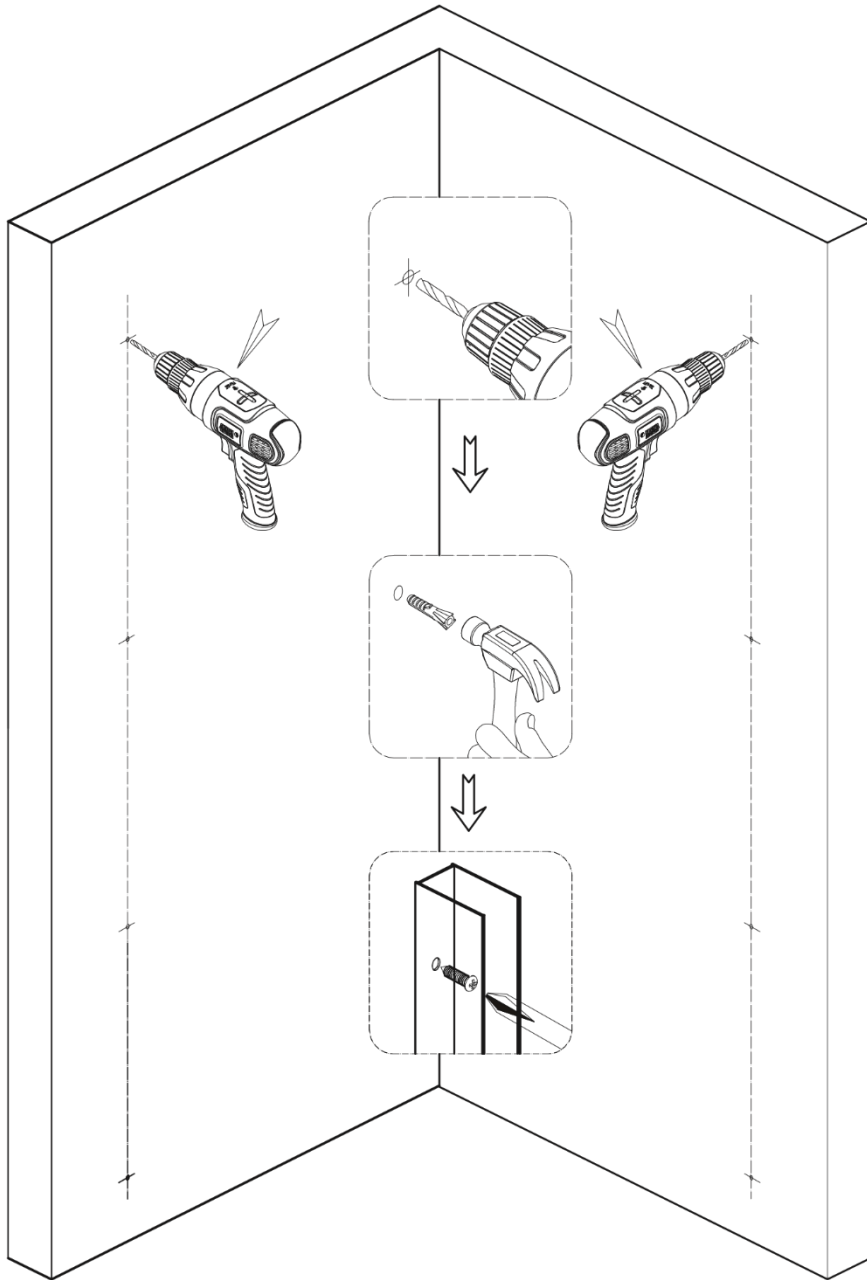
- Under no circumstances should you attempt to drill through the glass, damage or injury may occur
- Please handle all glass with care, avoiding knocks and shock loading to all sides and edges. Safety glass cannot be reworked.
- Care should be taken when drilling into walls to avoid hidden pipes or electrical cables.



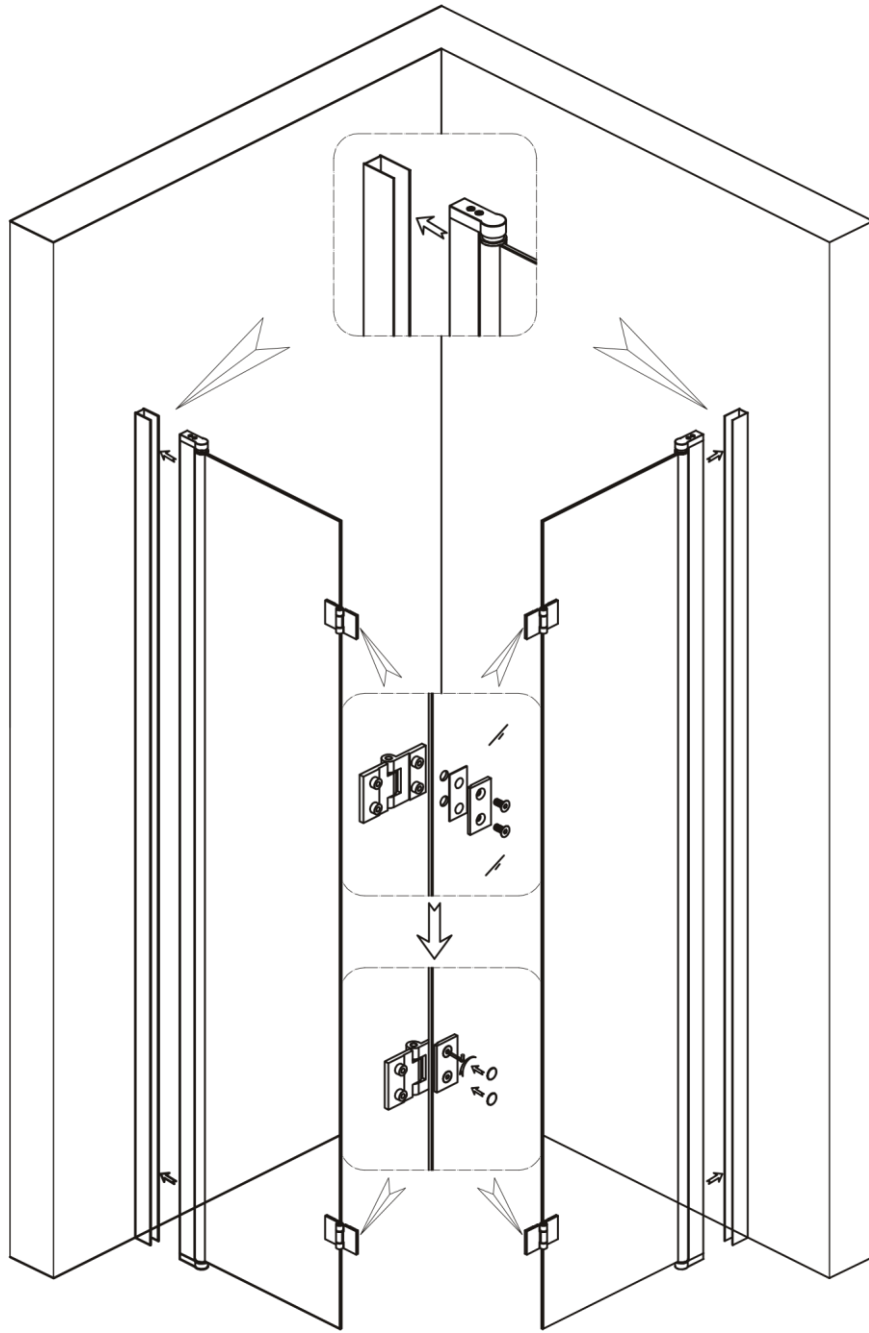
1. Measure the size of your shower enclosure against the walls.



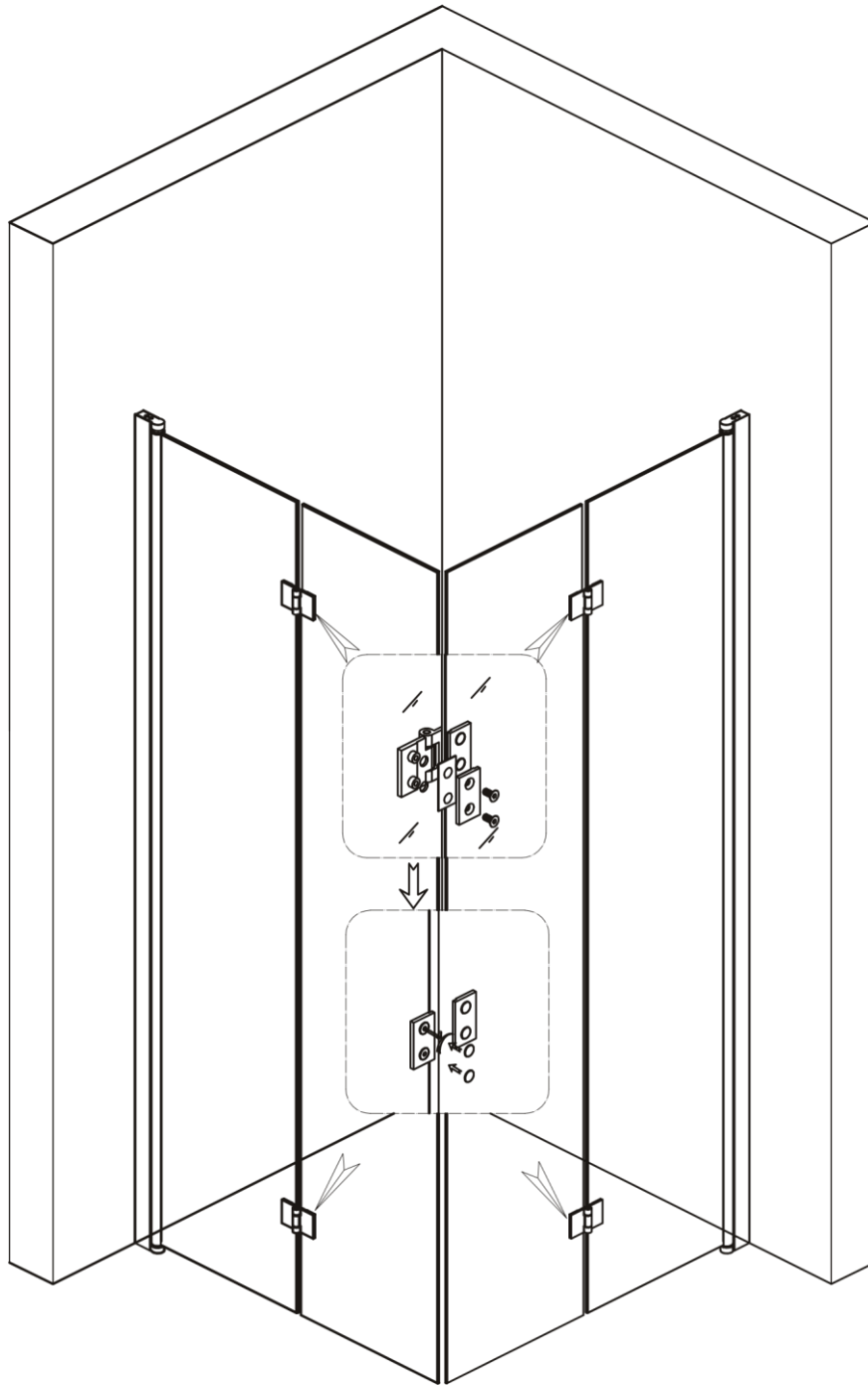
2. Place the aluminium profiles against the walls, marking where holes will be drilled.



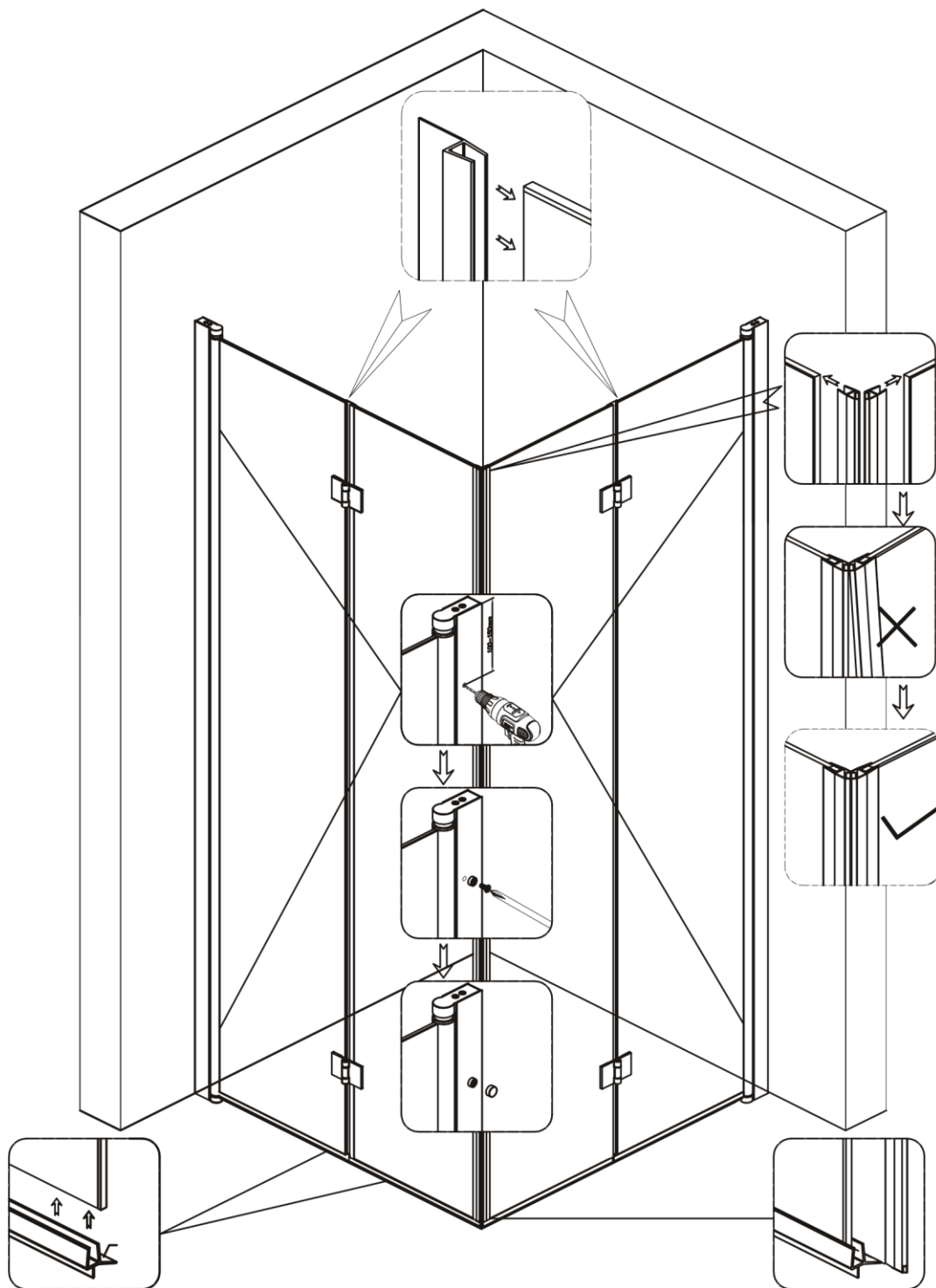
3. Drill holes and insert wall plugs.
4. Screw the aluminium profiles onto the walls.



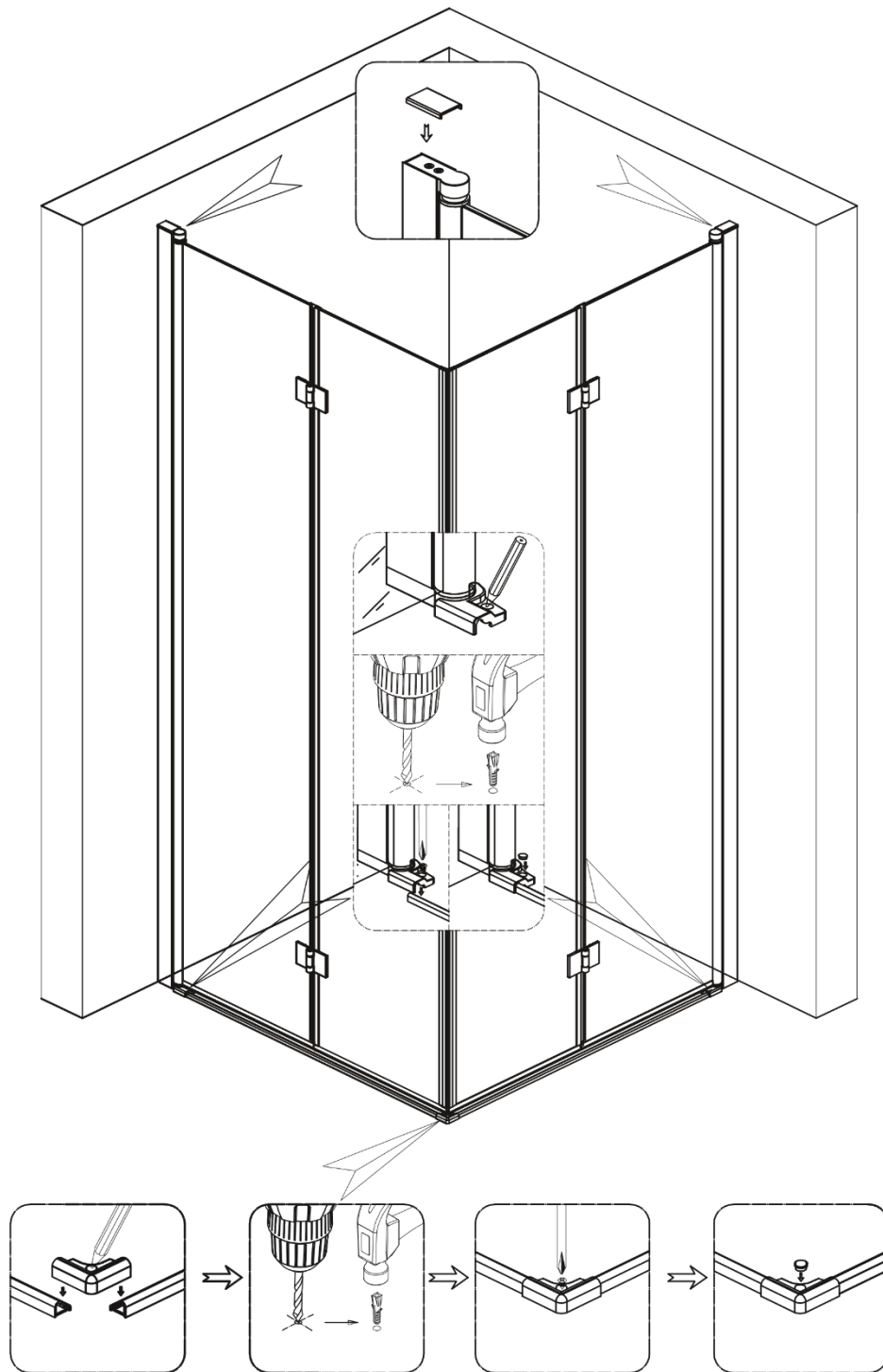
5. Insert the glass side panels into the aluminium profiles.
6. Attach the hinges to the glass side panels.



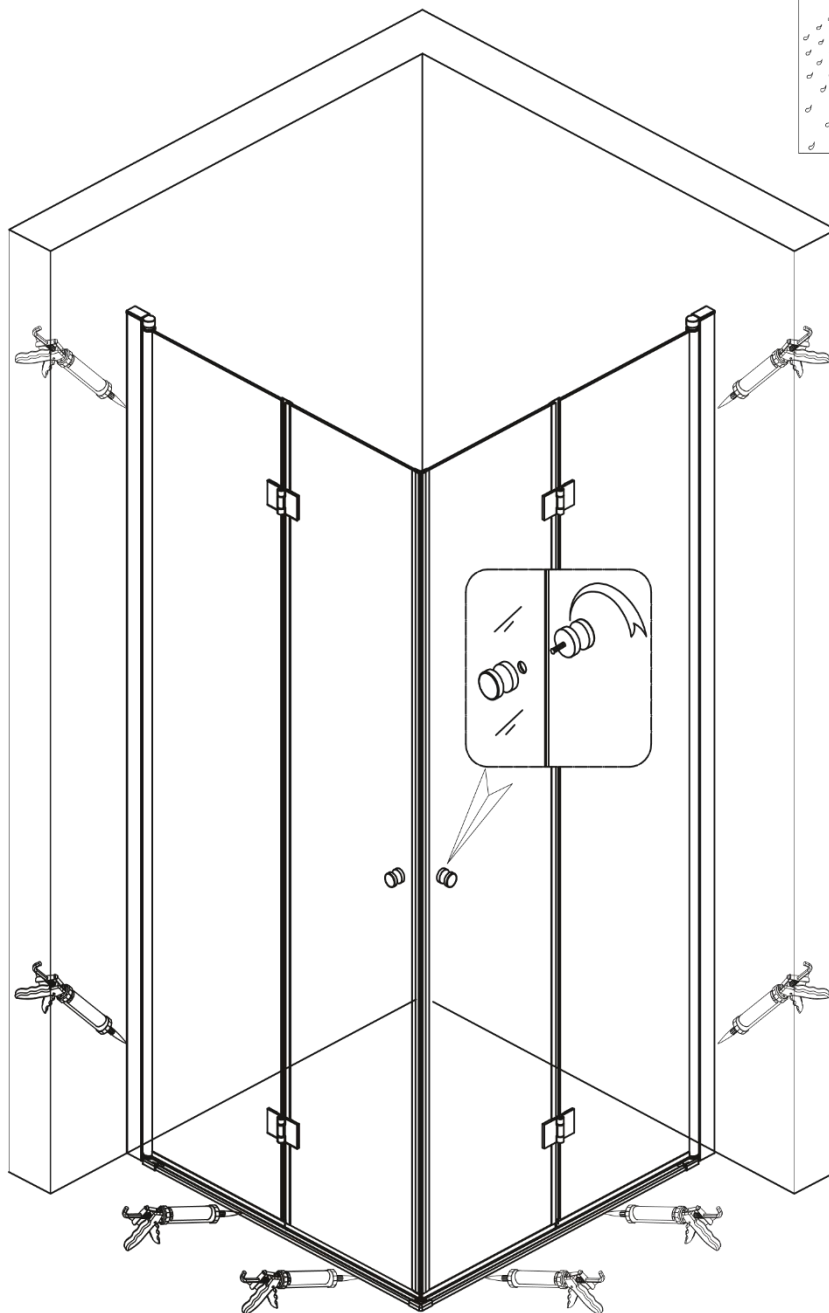
7. Position the glass doors, attaching them to the hinges.



8. Attach the side seals to the glass doors.
9. Attach the bottom seals to the glass doors and side panels.
10. Drill pilot holes in the aluminium profiles, screwing them to the side panels.
11. Insert caps cover the holes.



12. Insert caps on top of both aluminium profiles.
13. Place the glass fixing pieces into position, marking where holes will be drilled.
14. Drill holes and insert plugs.
15. Position the weather bars and screw the fixing pieces into place.



16. Attach the handles to the glass doors.
17. Silicone and allow to dry for 24 hours.