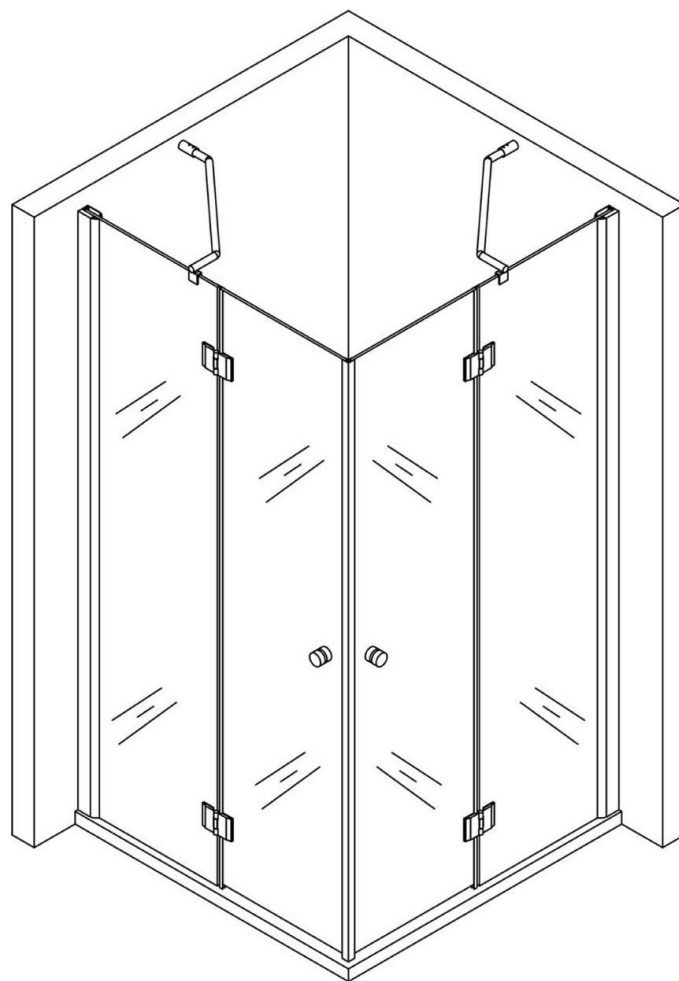




DUROVIN
BATHROOMS

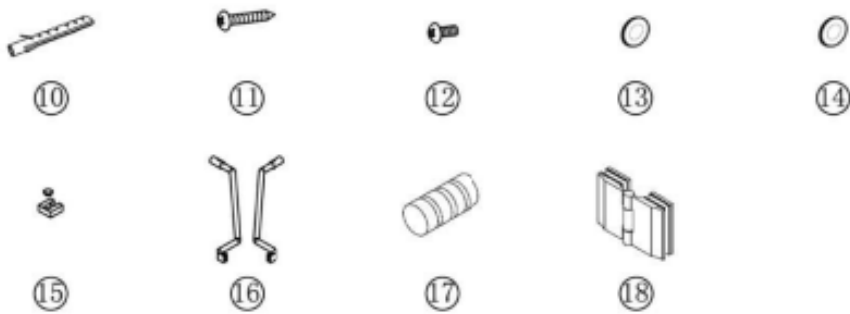
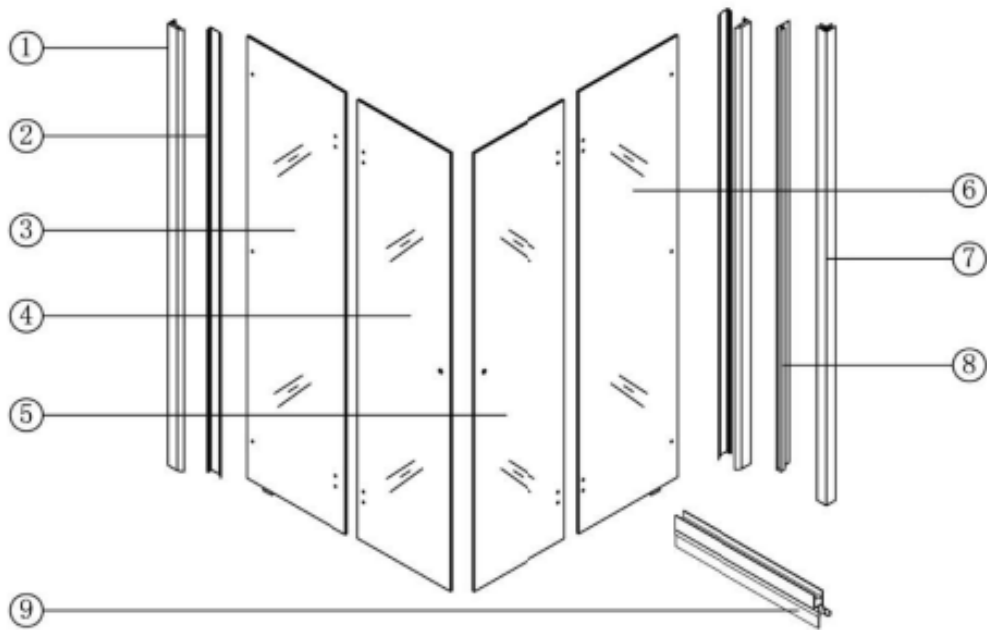


Ravenna 1 L Shape Instructions

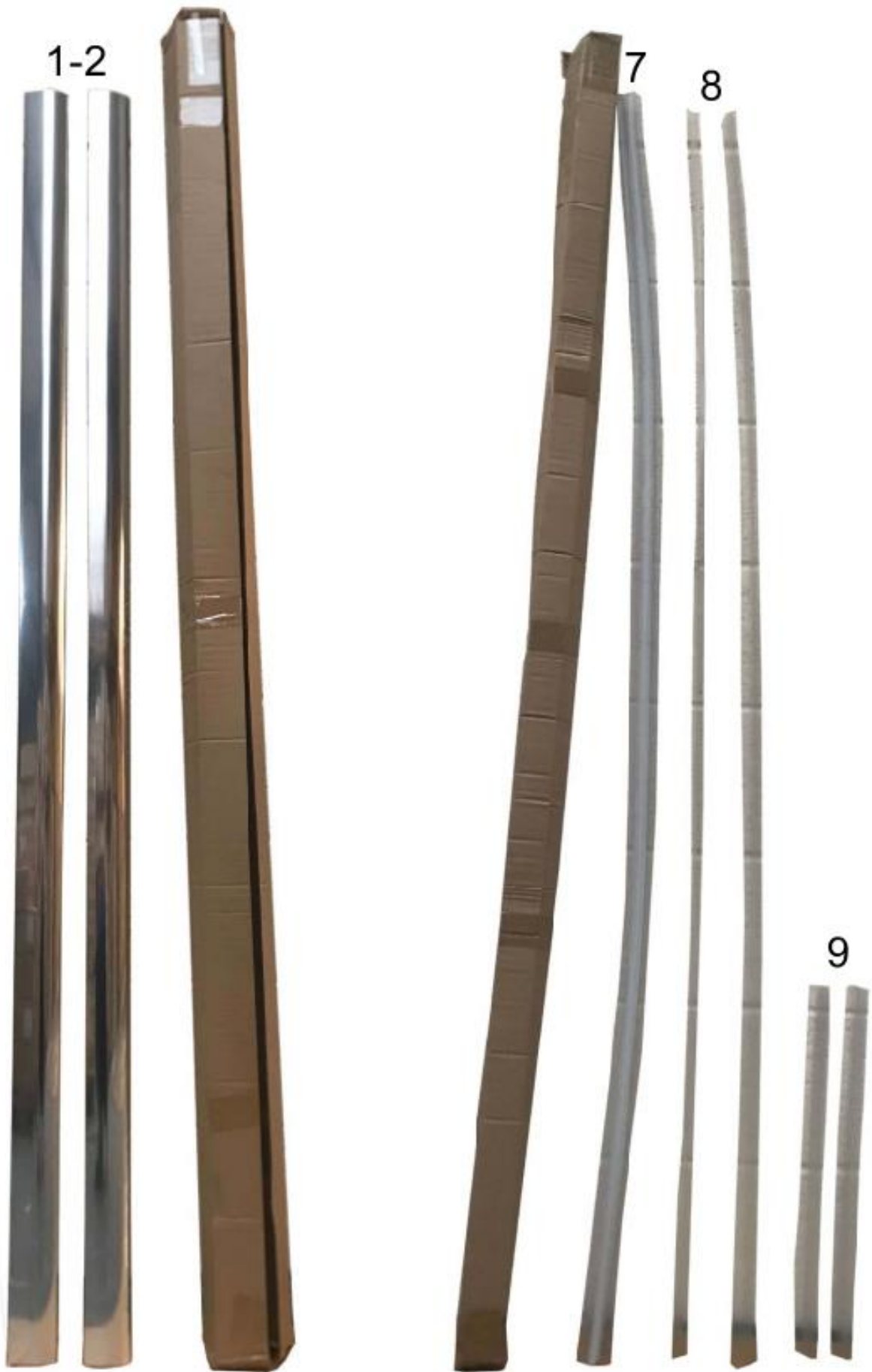
Table of Contents

Included Parts	3
Tools Required	6
Glass side panel assembly	7
Glass door panel assembly	8
Supporting bar assembly.....	9
Apply silicone sealant.....	10

Included Parts

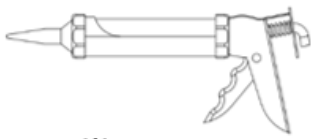


Ref	Description	Qty	Ref	Description	Qty	Ref	Description	Qty
①	Aluminium profile	2	⑦	Magnetic door seals	1	⑬	Washers	6
②	Decorative bar	2	⑧	Fixed panel seals	2	⑭	Washers	6
③	Glass side panel	1	⑨	Bottom door seals	2	⑮	Fixing pieces	2
④	Glass door	1	⑩	Wall plugs	8	⑯	Supporting bars	2
⑤	Glass door	1	⑪	Screws	8	⑰	Handles	2
⑥	Glass side panel	1	⑫	Bolts	6	⑱	Hinges	4

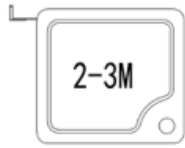




Tools Required



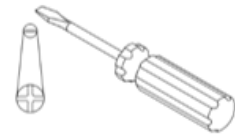
Silicone Gun



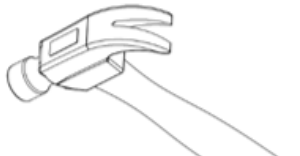
Tape Measure



Scissors



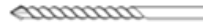
Philips Screwdriver



Hammer



Allen Keys



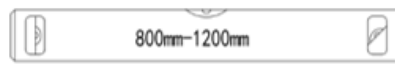
Drill Bit



Pencil



Power Drill



Level

Two people required. We recommend that a technically competent installer should undertake this installation.

Be sure you have all included parts and tools required before beginning installation and that you have plenty of space for assembly.

If you have ordered this shower enclosure with one of our shower trays, **please note** that tiling should be done before the shower tray is installed. This is so that the shower tray can be pushed up against the tiles and sealed with silicone.

PRE-INSTALLATION AND TECHNICAL REQUIREMENTS

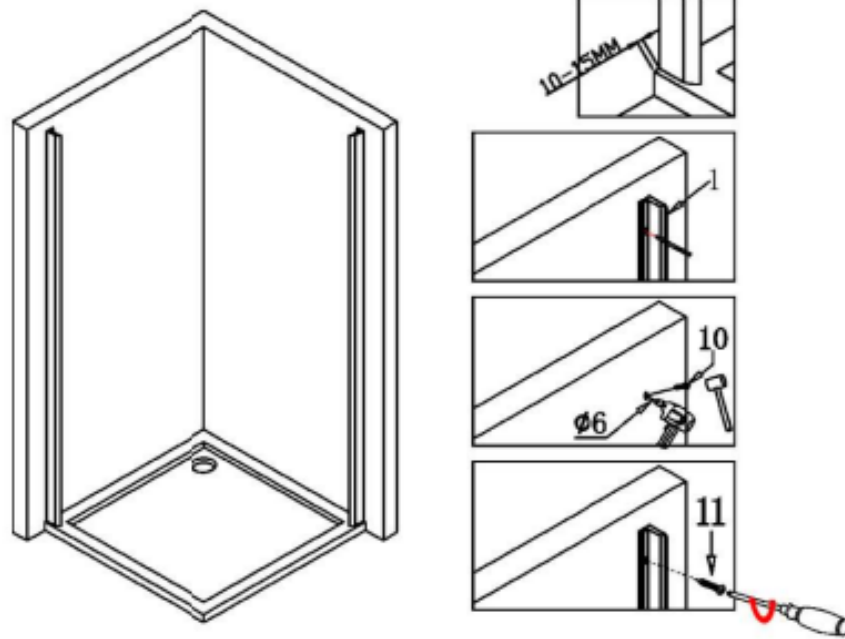
- All dimensions are shown in millimetres, except where otherwise indicated.
- Ensure that the enclosure set is fitted to a level floor and vertical wall surface.
- This instruction manual is applicable for both pre-tiled wall and plain walls.
- The wall fixings included with this product are suitable for solid walls only. Plasterboard or stud walls may require specialist fixings (not supplied).
- Due to the possibility of residual spray, the area around the outside of the shower tray should be tiled, or made otherwise water resistant.

IMPORTANT SAFETY NOTES

- Under no circumstances should you attempt to drill through the glass, damage or injury may occur
- Please handle all glass with care, avoiding knocks and shock loading to all sides and edges. Safety glass cannot be reworked.
- Care should be taken when drilling into walls to avoid hidden pipes or electrical cables.

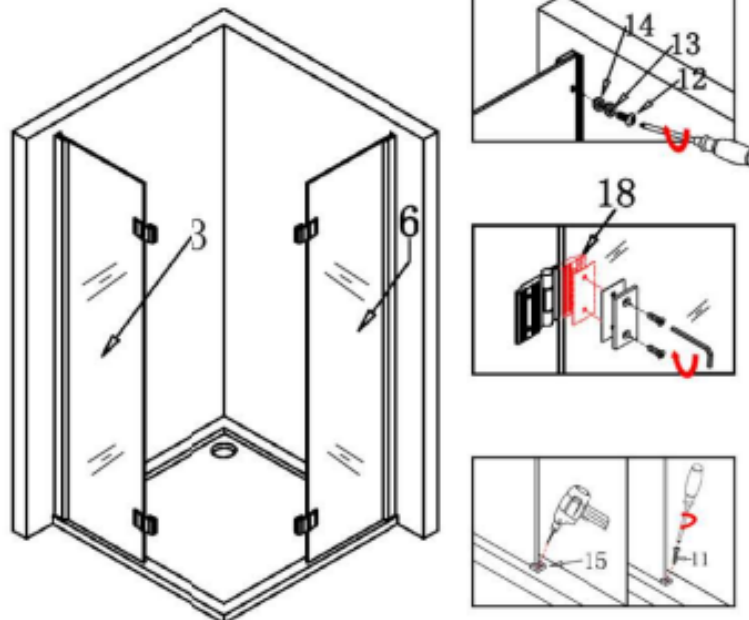
Glass side panel assembly

Step 1



- Drills holes into walls for the aluminium profiles.
- Insert wall plugs before screwing aluminium profiles onto the walls.

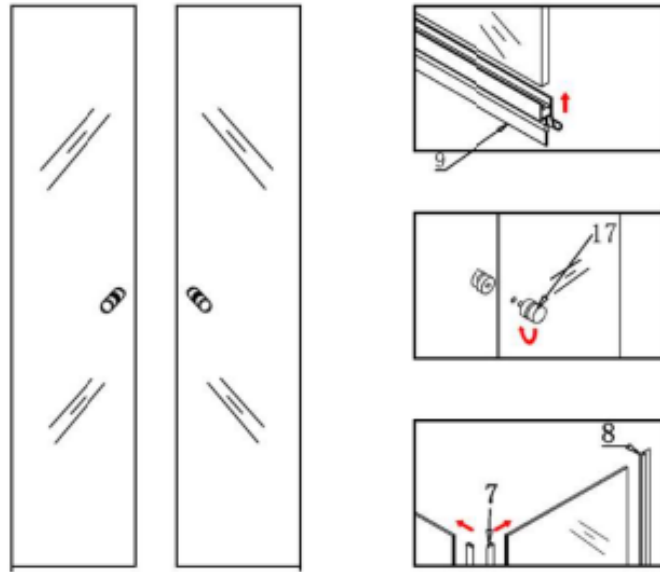
Step 2



- Attach the glass panels to the aluminium profiles.
- Attach hinges to the glass panels.
- Drill holes into the shower tray or floor for the glass fixing pieces and fix them into place.

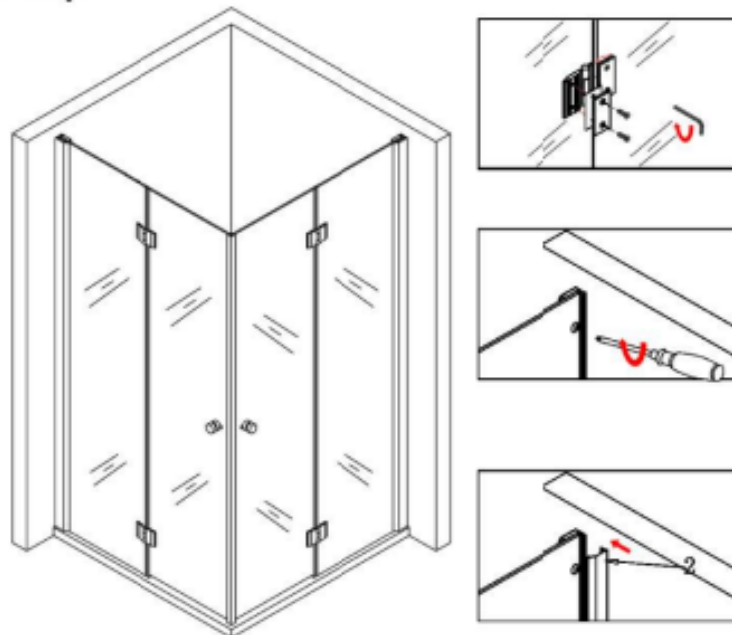
Glass door panel assembly

Step 3



- Slide the bottom seals onto both glass doors.
- Attach the handles to the glass doors.
- Slide the magnetic door seals onto both glass doors.
- Slide the fixed panel seals onto both fixed panels.

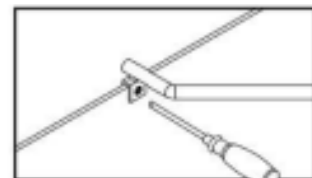
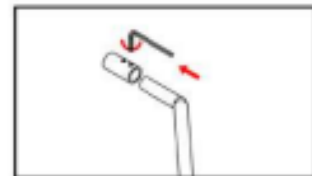
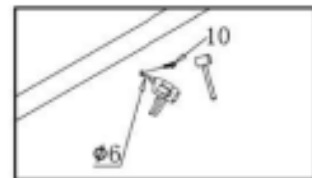
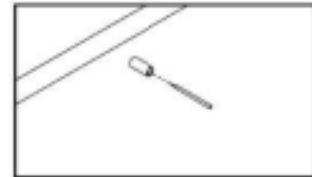
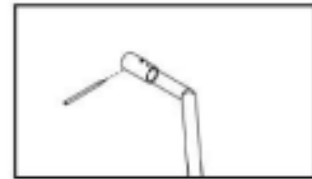
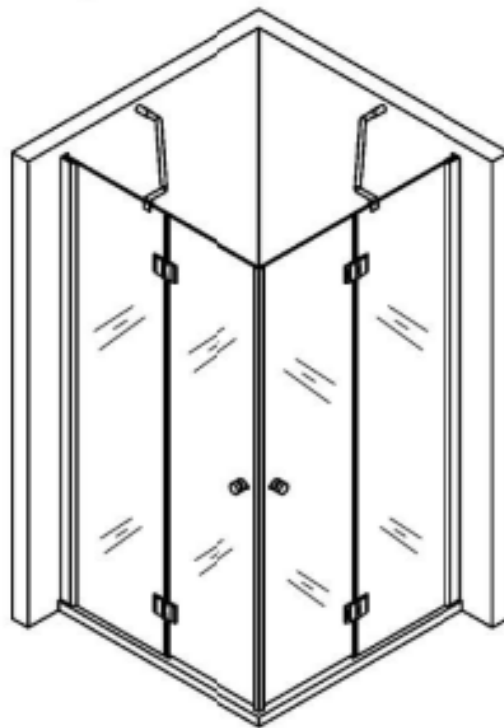
Step 4



- Attach the glass doors onto the hinges.
- Screw the glass panels to the aluminium profiles.
- Attach the decorative aluminium bar to cover screws on the interior of the shower enclosure.

Supporting bar assembly

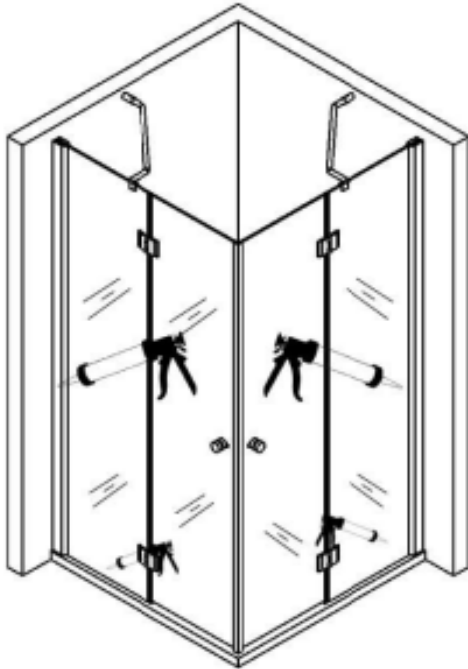
Step 5



- Line up where the supporting bar will sit.
- Drill holes and insert wall plugs into walls.
- Attach the supporting bar to the wall.

Apply silicone sealant

Step 6



- Seal the edges with silicone and allow to dry for 24 hours.